

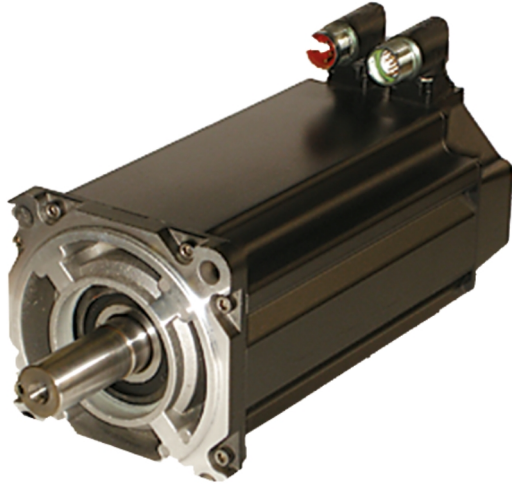
Catalogue No: **MPL-B4560F-SJ72AA**

SERVO MOTOR 3000RPM 14.1Nm SINGLE TURN NO BRAKE KEYED

Automation Systems > Motion Systems > Servo Motors and Cables > Allen-Bradley MP Series Servo Motors > MP-Series™ Low Inertia (MPL) Servo Motors > MP-Series™ Low Inertia 460V AC Motors



MPL SERVO MOTOR 3000RPM 14.1Nm SINGLE TURN NO BRAKE KEYED



- Continuous stall torque of 0.26 to 163Nm (2.3 to 1440lb-in.)
- Peak torque of 0.77 to 278Nm (6.8 to 2460lb-in.)
- Integral 24V brake option
- Absolute multi-turn and single-turn high resolution, incremental encoder and resolver feedback options
- Low-profile, field-reversible motor connectors for minimal servo motor impact on machine design
- DIN connector versions allow flexible orientation of connectors and use of a single cable family with all MP-Series motors

Representative Photo Only
(actual product may vary based on configuration selections)

SPECIFICATIONS

Product Series	MPL Low Inertia
Component Type Motion Control	Rotary Servo Motor
Mounting, Motor	Flange Mount, Metric
Brake	No Y / N
Food Grade	No
Connector, Motor End	SpeedTec DIN (Type M7)
Keyed Shaft	Yes Y / N
Feedback Type	Absolute Single-turn type
Feedback Resolution	Sin/Cos, 1024 cycles/rev resolution
Feedback Protocol	Hiperface protocol
Speed, Rated	3000 rpm
Speed, Max	3000 rpm
Magnet Stack Length	60 = 152.4mm
Frame Size	Frame 45 / Frame 130 = 130mm size
Voltage Class	400 V AC
Shaft Seal	No Y / N
Special / Custom	No
Output Torque, Continuous	14.1 Nm, continuous
Output Torque, Peak	34.4 Nm
Compatible Drive Series'	Kinetix 5500 (Bul. 2198) compatible Kinetix 6200 / 6500 (Bul. 2094) Kinetix 6000 (Bul. 2094) Kinetix 300 (Bul. 2097) Kinetix 350 (Bul. 2097) Kinetix 2000 (Bul. 2093) Kinetix 7000 (Bul. 2099) Ultra 3000 (Bul. 2098)
Rated Power, Continuous	3.2 kW continuous
Rotor Inertia	0.00078 kg m ² , rotor
Operating Temperature, Max	40 °C max

Catalogue No: **MPL-B4560F-SJ72AA**

SERVO MOTOR 3000RPM 14.1Nm SINGLE TURN NO BRAKE KEYED

Automation Systems > Motion Systems > Servo Motors and Cables > Allen-Bradley MP Series Servo Motors > MP-Series™ Low Inertia (MPL) Servo Motors > MP-Series™ Low Inertia 460V AC Motors



Operating Temperature, Min	0 °C min
Storage Temperature, Max	70 °C max
Storage Temperature, Min	-30 °C min
Relative Humidity, Min	5 %RH
Relative Humidity, Max	95 %RH
Weight	11.82 kg
IP Rating	IP50 IP66
Details, IP Rating	IP50 minimum, without shaft seal; IP66 with optional shaft seal and use of environmentally sealed cable connectors
Shock Acceleration (Max.)	20 g
Shock Duration (Max.)	6 ms
Vibration Acceleration (Max.)	2.5 m/s ²
Vibration Frequency, Operational (Max.)	2000 Hz

REFERENCES

IECEX Certificate	-
Supplier Declaration of Conformity:	-
Installation Guide:	-
User Manual:	-
Manufacturer Datasheet:	-
Manufacturer Catalogue & Product Selection:	-